

Direction and Suggestions for
Installing 1966 - 67

Chevelle Trunk Panel Kit

Part No. 516-5



www.customtrunkpanels.com

Please Note;

Fit all uncovered panels first to see what will need trimmed or where you will need padding added. The panels fit much tighter with material on them and will not move once set into place. **It is tension that holds these panels in place, not fasteners.**

Based on your particular car, you may find it necessary to custom-trim here and there. It will also depend upon the type of material you choose to cover the trunk kit panels, how much foam you add or how you decide to custom finish your panels. If you find it necessary, a quick trim adjustment using an electric sander with 80 grit paper or a rasp file is all that will be required.

For some installations, it will be necessary to remove the spare tire hold down brackets using a cutoff wheel.

A typical stock trunk area are on most sedans and hardtops. This is where the installation process is the same, regardless. Trim sanding is all that will be needed.

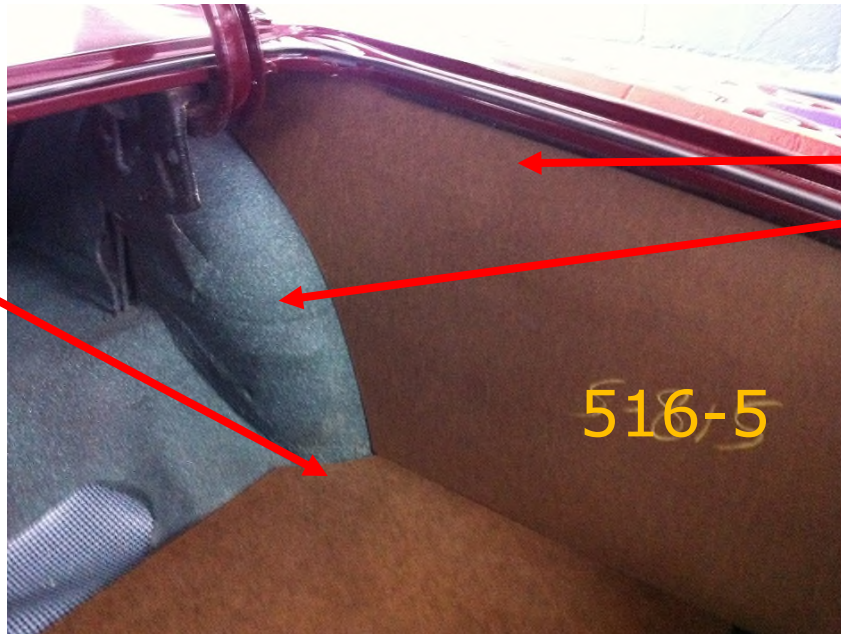
For convertible, it will be necessary to cut trim the panels.
Thank you for purchasing our product.

www.customtrunkpanels.com

The first piece in will be the floor. Be sure it is tight up against the wheel wells. You will want to cover the exposed areas with material of your choice.

The second piece in will be the right side fender panel. This will be tricky because there is no material to hold them in place. Put it in by tilting the bottom of panel back and sliding the top of the panel in first., then sliding the bottom out slowly. This panel will be on top of the floor pane.Please Note: Adjustments to the panels fit can be made with a rasp or a orbital sander using 80 grit sanding paper.

The crayon marked is "this side out/up" on all panels.

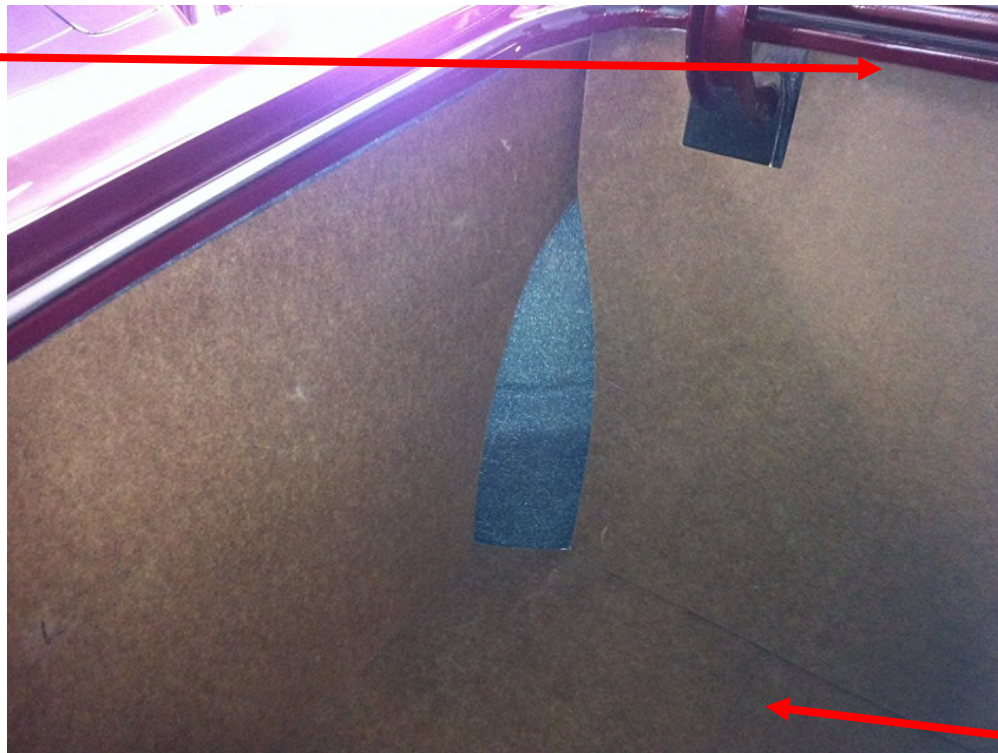


The next piece to go is the left side panel. It's the same as the right, it will sit on top of the floor panel. This will get tricky because there is nothing to hold them in place. They will rest under and against the lip of the trunk. See the picture for detail. You will want to cover the exposed areas of the fender well area first with a material of your choice.



The crayon marked is "this side out/up" on all panels.

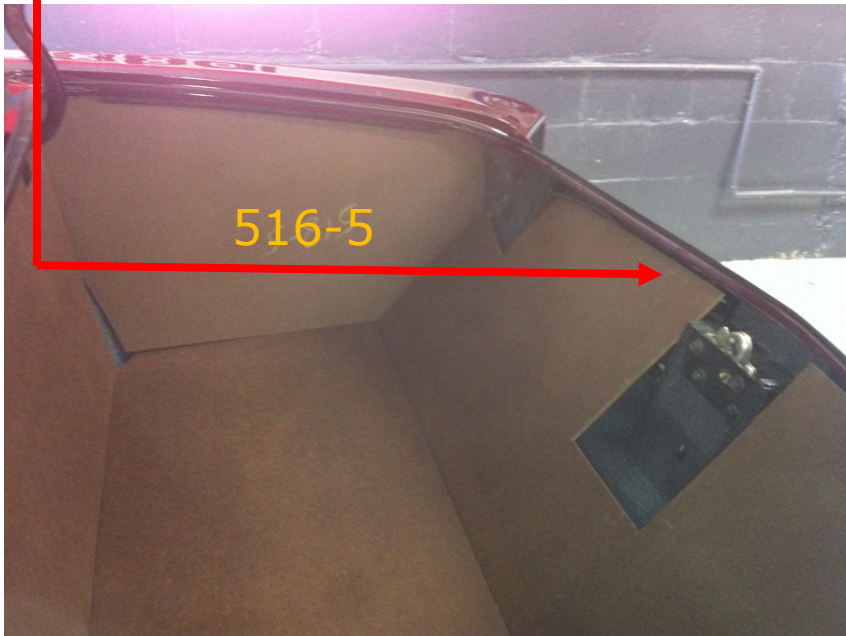
The next panel in is the hinge panel. It goes in top first with the bottom tilted back and then slide the panel in from the bottom . This panel will be on top of the floor panel and under the edge of the trunk.



The
crayon
marked is
"this side
out/up"
on all
panels.

www.customtrunkpanels.com

The last panel installed is the trunk latch panel. The two thin edges of this panel are the easiest pieces that can break, handle this panel carefully. Slide the panel in under the lip of the trunk. The panel will set outside of the right and left fender panel and should be flush against the latch panel. The final step is to rest on the back edge of the floor panel against the floor panel. See the pictures for fitment.



These pictures show a finished trunk done in a black felt. Your material can be of your choice and design. Note that the bare spot of the wheel well has been covered in a matching material on both sides. This panel kit will both clean up your trunk area and will show a trick look to you trunk. Good luck.



Now Available for Most Classic Cars Trunk Panel Kits for Finishing with Upholstery

- Chevy 1955-56-57 Panel Kit No. 417-4
- Camaro 1967-68-69 Panel Kit No. 317-6
- Chevelle 1966 - 67 Panel Kit No. 516-5
- Chevelle 1968-69 Panel Kit No. 517-5
- Chevelle 1970-72 Panel Kit No. 517-7
- Chevy Impala 1962-64 Panel Kit No. 917-4
- Nova 1968-72 Panel Kit No. 817-5
- GTO 1966-67 Panel Kit No. 718-5
- Mustang 1964-66 Panel Kit No. 617-5
- Mustang 1967-68 Panel Kit No. 618-5

Save time and money using our trunk panel kits for upholstery from
www.customtrunkpanels.com Visit our new online store for more Chevy products.

Tech line for help 330-565-4688, ask for Bill.

